

RETAIL SPACE FOR RENT, street Nádražní, Praha 5

Retail space for lease on the ground floor in five-story residential building next to one of Prague's most popular shopping centers. Great location fast and easy access to the city centre and the ring road - metro station Anděl (line B), number of tram stops and a bus and train station are all nearby.

and the shopping centre Nový Smíchov, 2 minutes from the tram stop and Smíchov Railway Station.

Anděl (line B) metro station is located just below the building, while a number of tram stops and a bus and train station are all nearby.

situated on the ground and first floor of a well maintained residential building in a prestigious location of Prague 5 – Smíchov. views of a quiet landscaped courtyard is situated on the 5th floor of the Smíchov City residential building with an elevator, located close to the Anděl commercial center in Smíchov and a newly arising district with a pedestrian zone, great accessibility by metro and tram, within easy reach of the French School, the Smíchov and Výtoň embankments, and several sports grounds. Within easy reach of rich amenities and services, the Anděl metro station and the Na Knížecí bus terminal.

The area boasts the Nový Smíchov shopping / entertainment center and all amenities. The building is very easily accessible by car and public transport – the Anděl metro station (line B), tram and bus stops are within walking distance. Easy connection by car via the inner city circuit. Smíchov area is linked to Strahovský and Mrázovka tunnels, which is directly connected to the city bypass, and then to highways. The connection to the International Ruzyně airport: approximately 20 minutes by

372 CZK

Specification

Total area: 188 m²

Estate id: 6774

Web link:

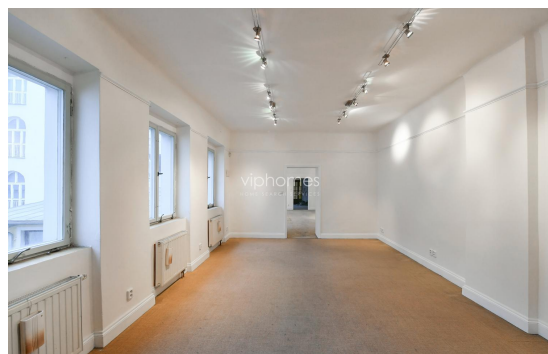
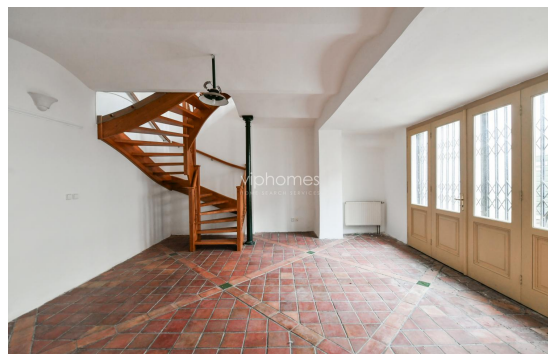
www.viphomes.cz/6774

Agent:

Mária Mihinová

Phone: +420 606 731 973, Email: viphomes@viphomes.cz

100 m2, 2 rooms, kitchenette, toilet / bath. Openable windows.



Estate id: 6774

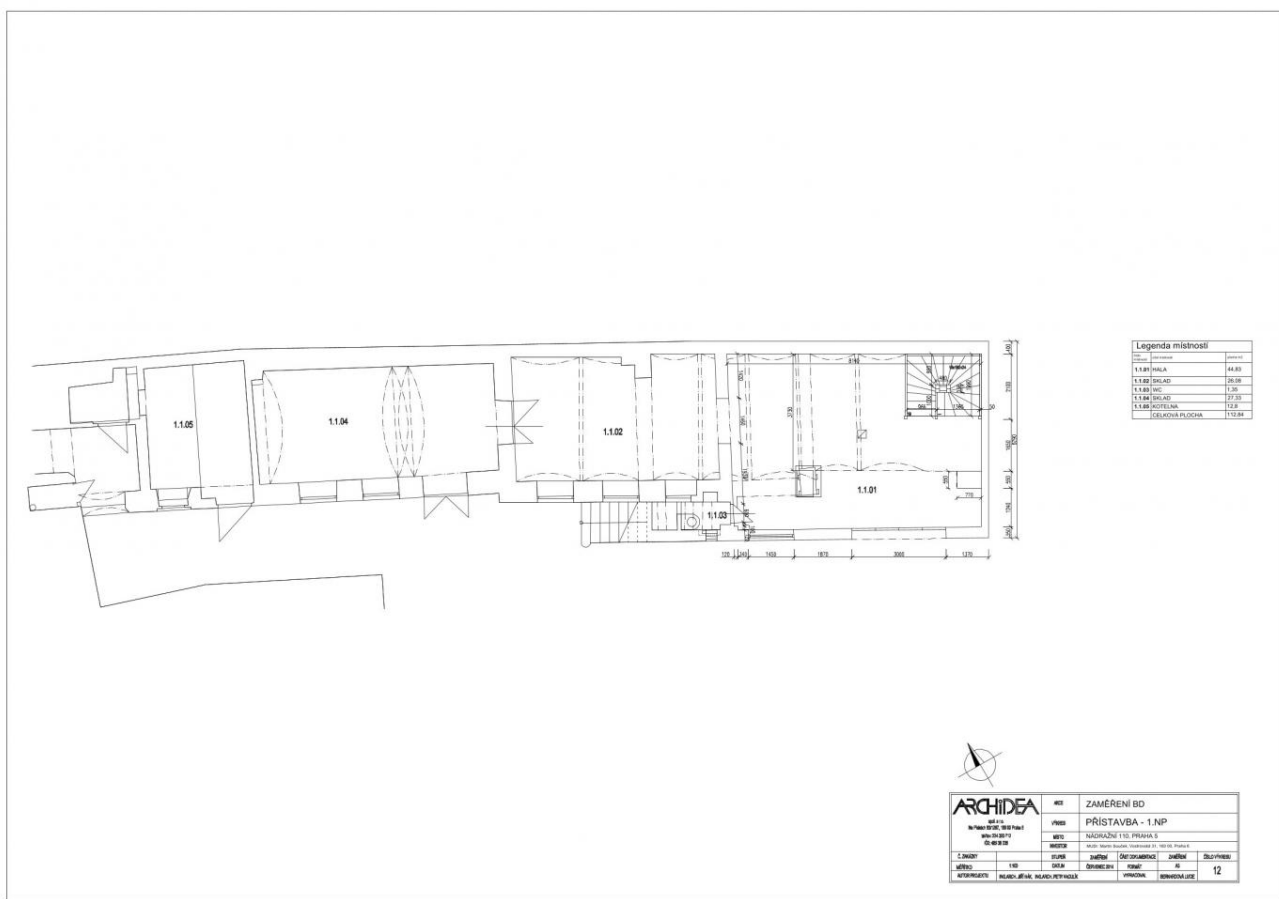
Web link:

www.viphomes.cz/6774

Agent:

Mária Mihinová

Phone: +420 606 731 973, Email: viphomes@viphomes.cz



Legenda místnosti

Číslo místnosti	Název	Plocha (m ²)
1.1.01	PRÁKLA	44,83
1.1.02	LOUČKO	26,39
1.1.03	WC	1,36
1.1.04	LOUČKO	27,33
1.1.05	KOCHÁNKA	12,8
CELKOVÁ PLOCHA		113,81

ARCHIDEA

ARCHITECTONICKÝ ÚSTAV
s.r.o.
NÁM. REPUBLIKY 1
110 00 PRAHA 5

ZAMĚŘENÍ BO

PRÍSTAVBA - 1.NP

NÁDRAŽNÍ TIS, PRAHA 5

1:200

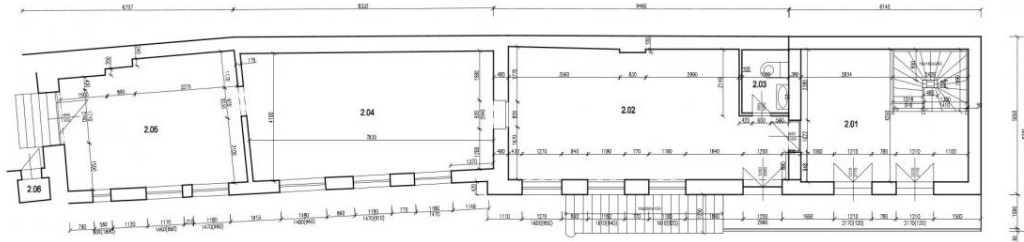
Č. ÚLOHU	STUPŇ	ZHŮBNĚ	DECIMÁLNÍ	ZHŮBNĚ	CELKOVÁ PLOCHA
110	0101A	00000000	0000	00	12

PROJEKTOVATEL: MGR. A. ŠTĚPÁNEK
KONTAKT: MGR. A. ŠTĚPÁNEK

Estate id: 6774

Web link: www.viphomes.cz/6774

Agent: Mária Mihinová
Phone: +420 606 731 973, Email: viphomes@viphomes.cz



Legenda místnosti	
Číslo	Název
2.01	KLADNA
2.02	POKJ
2.03	KC
2.04	POKJ
2.05	POKJ
2.06	SESTAVENÁ KUCHEN
2.07	SESTAVENÁ KUCHEN



ARCHIDEA s.r.o. ARCHITECTONICKÝ ÚSTAV KALIBRŮVA 13 100 00 PRAHA 10	MEZ	ZAMĚŘENÍ BD	
	VÝKRES	PŘÍSTAVBA - 2.NP	
	MEZ	NÁVRHŮVÉ ÚPLNÉ PŘÍKRESY	
PROJEKT	SOUBŮR NÁVRHŮVÉHO ŘEŠENÍ VELEBNĚ		
ČÍSLO	STAV	PROJEKT	STRUKTURÁLNÍ
MEZ	100	STAV	Č. 13
PROJEKTANT	KLADNA, J. H. H. KLADNA, P. H. H. KLADNA	PROJEKTOVATEL	STRUKTURÁLNÍ

Estate id: 6774

Web link:

www.viphomes.cz/6774

Agent:

Mária Mihinová

Phone: +420 606 731 973, Email: viphomes@viphomes.cz