



APARTMENT FOR RENT, Str. Italská, Prague 2 - Vinohrady

Enjoy the desirable Prague indoor-outdoor lifestyle with seamless access to the stunning heated pool & sauna, landscaped grounds and grassy area for sports and children. Located in a portered building in the heart of Vinohrady, this 4th floor 2-bedroom airconditioned apartment of approximately 110 sq m offers mixture of contemporary and traditional interiors with many original features. For the Tenant's comfort the residential building is equipped with a leisure zone - an outdoor heated swimming pool equipped with hydro massage and the sauna. A blooming garden where you can feel genuinely at home, far from traffic, stress and problems of everyday life.

The lower level accommodates a living room with a fully fitted open kitchen and terrace access, one bedroom / bathroom with bathtub, bidet and toilet, and entrance hall with a guest toilet. Top floor features an open gallery with the second bedroom and a study corner.

Special features include Air-conditioning, hardwood floors throughout, carpets, security door, video entry phone, satellite TV, washer/dryer. Apartment amenities include: alarm, 24 hour reception.

Rent : 2 000 EUR / month.

Fixed payment for services and Internet EUR 200 / month + VAT. Deposit for utilities EUR 250 / month + VAT. Optional garage parking at extra fee.

In adjacent streets, the Prague's system of parking zones is applied and the local residents are entitled to parking cards.



1x



2x



49 970 CZK

Fee Information 1 month rent + 21 % VAT.

Specification

Area: 104 m²

Bedrooms: 2

Bathrooms: 1

Floor: 4th floor

- ☒ Lift
- ☒ parkovací stání
- ☒ Sauna

- ☒ Terrace (6 m2)
- ☒ Outdoor swimming pool
- ☒ Air-conditioning

Estate id: 6001

Web link:

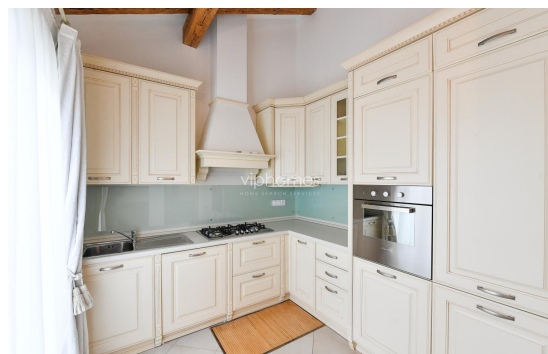
www.viphomes.cz/6001

Agent:

Mária Mihinová

Phone: +420 606 731 973, Email: viphomes@viphomes.cz

Available immediately.



Estate id: 6001

Web link:

www.viphomes.cz/6001

Agent:

Mária Mihinová

Phone: +420 606 731 973, Email: viphomes@viphomes.cz