

APARTMENT FOR RENT, Prague 1 - New Town

Split-level apartment with a terrace on the 5th and 6th floors of a completely reconstructed building, short stroll away from Wenceslas sq. Situated minutes from tram stops and a metro station, with all the comforts of the city center including restaurants, shops and other services. Reconstruction of the entire building was performed in 2001. The residential building is characteristic by many original historical elements – high ceilings, wooden parquet floors, stucco decorations. At the same time, the most modern construction technologies and equipment were used – lift, satellite TV, cable TV, four providers of telecommunication services.

The interior will offer a living room, fully equipped kitchen, 4 bedrooms, gallery, 2 bathrooms, toilet, closet and a hall. Wooden floors and windows, ceramic tiles in the bathrooms and hallway. Terrace with a sun-deck - 360 degrees view. Optional parking at extra fee 2.700 - 4.700 CZK / month. (neighboring building)

Available 1.08.2024

2x 4x

76 980 CZK
+Monthly fees 11 930 CZK

Specification

Area: 291 m²
Bedrooms: 4
Bathrooms: 2
Floor: 5th floor

☒ Maisonette/Duplex
☒ Terrace

☒ Lift

Estate id: 2729

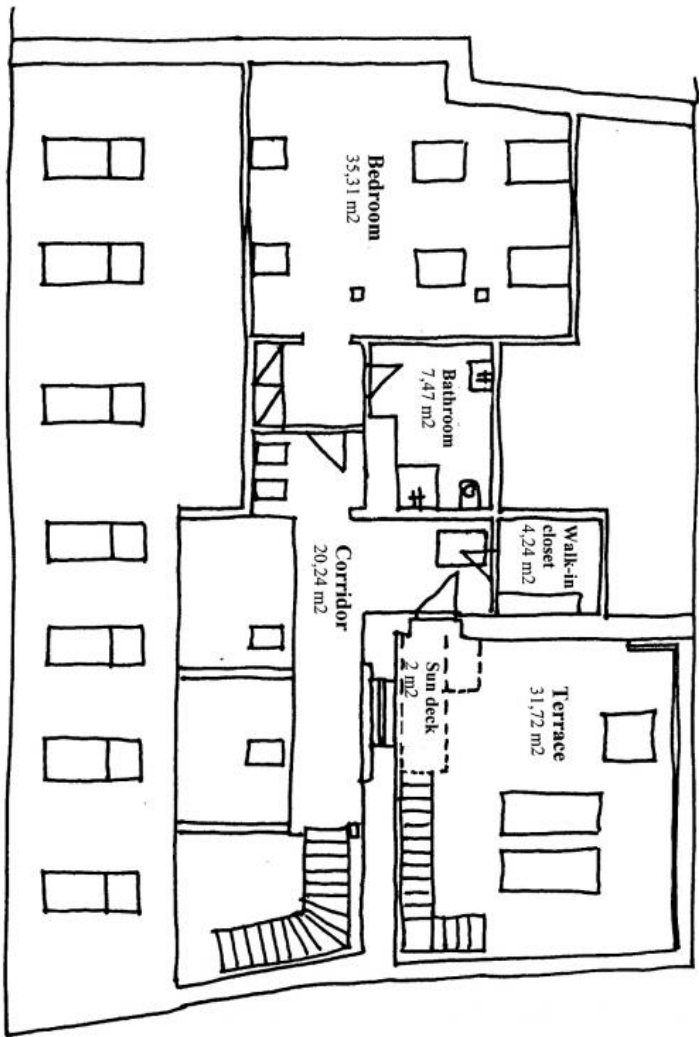
Web link:

www.viphomes.cz/2729

Agent:

Mária Mihinová

Phone: +420 606 731 973, Email: viphomes@viphomes.cz



7th FLOOR

6th FLOOR

