



## APARTMENT FOR RENT, street Pláničkova, Praha 6 - Veleslavín

Bright 2-bedroom flat set on the 1st floor floor in a modern secure residential development with camera system and parking. Quiet location within easy reach of the Hvězda park with many sport options. Fast and easy connection to the city center (metro station Petřiny, numerous trams, buses). Wealth of amenities including shops (Billa, Albert, Kaufland), services, schools and restaurants.

The interior of the apartment features: bright living room with a fully fitted open kitchen and terrace access (10 m<sup>2</sup>), 1 bedroom with built-in wardrobes and green views, bathroom with tub and a separate toilet.

Parquet floors, tiles, security door, electric blinds, washing machine.

Available December, 2024



**25 000 CZK**  
+Monthly fees 5 000 CZK

### Specification

Area: 59 m<sup>2</sup>

Bedrooms: 1

Bathrooms: 1

Floor: 1st floor

Lift

parkovací stání

Terrace (9 m<sup>2</sup>)

Estate id: 4887

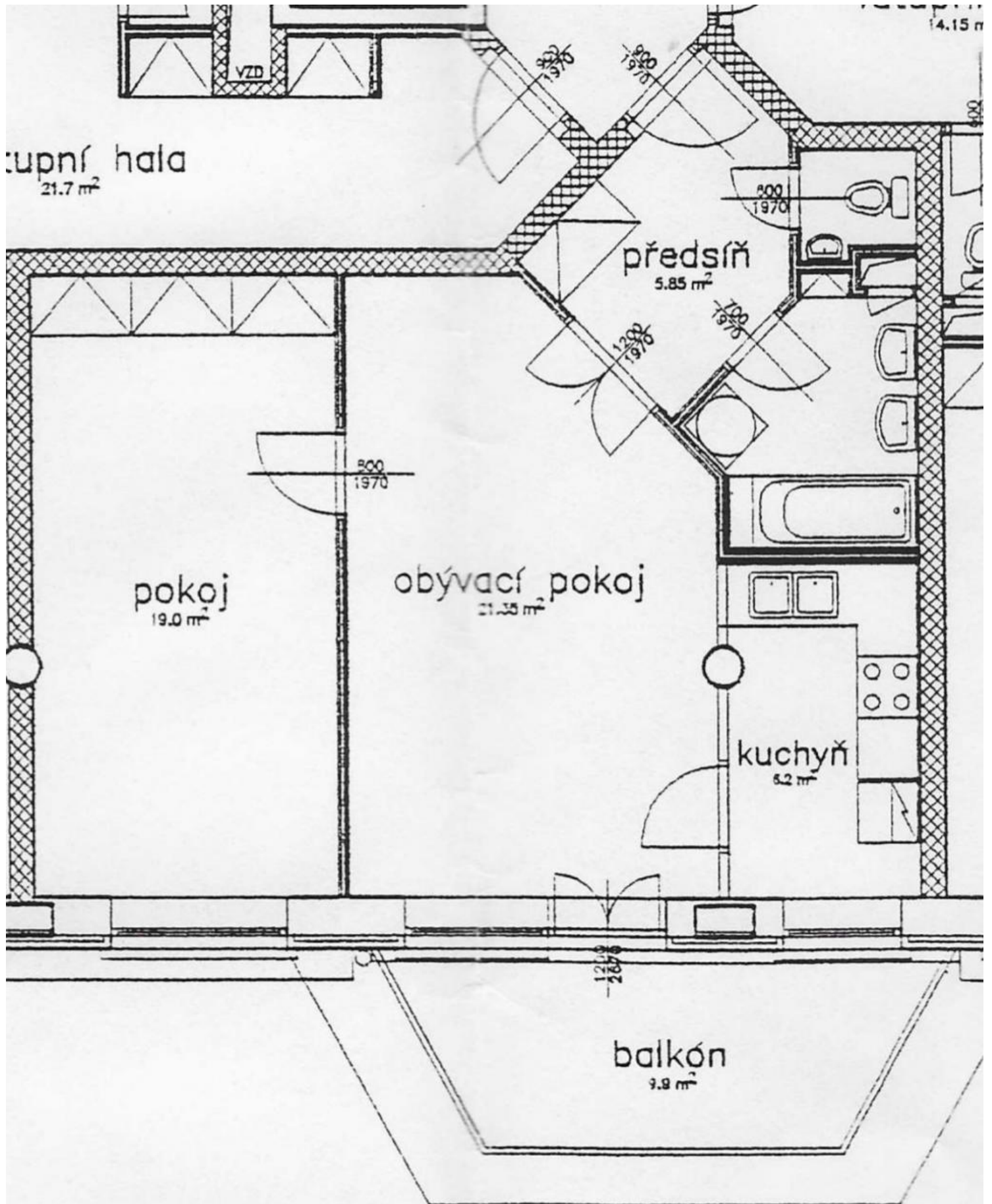
Web link:

[www.viphomes.cz/4887](http://www.viphomes.cz/4887)

Agent:

Mária Mihinová

Phone: +420 606 731 973, Email: [viphomes@viphomes.cz](mailto:viphomes@viphomes.cz)



byt 2 + 1