



APARTMENT FOR RENT, street Laubova, Prague 3 - Vinohrady

Presented in fantastic condition this 2 bed 2 bath apartment boasts substantial room proportions with a high standard of décor (design by the renowned Donlic studio). Great location - quiet tree lined street in the highly sought after Vinohrady residential neighborhood: the city centre and the throbbing city life are literally at hand – Wenceslas Square is situated within mere five tram stations along the Vinohradská Street. A perfect access to other parts of Prague is guaranteed by the crossing of metro/bus and tram lines at Náměstí Jiřího z Poděbrad. Both shopping and entertainment are to be found at the Flora Palace. Rich social life, exquisite restaurants, chic cafés and small shops, large parks, tree-lined streets with its unique architecture gems create an unforgettable local atmosphere.

The accommodation of approx. 115 m² + terrace 15 m² comprises open-plan kitchen / living room, bespoke joinery housing kitchen units, 2 bedroom, 2 ensuite bathrooms with designer sanitary ware, utility room equipped with a washer, and dryer, and a reception room

Wood floors throughout, recessed lighting / central switch, satellite and Internet connection, alarm, security door, video entry phone. Parking / furnishing can be arranged for extra fee. Cellar available. Tenant's fees : deposit for services and utilities CZK 10 000 / month. Parking available at extra fee 5 000 CZK / month.

2x  2x 

65 000 CZK
+Monthly fees 10 000 CZK

Specification

Area: 117 m²
Bedrooms: 2
Bathrooms: 2
Floor: 2nd floor

Lift

Terrace (18 m²)

Estate id: 5665

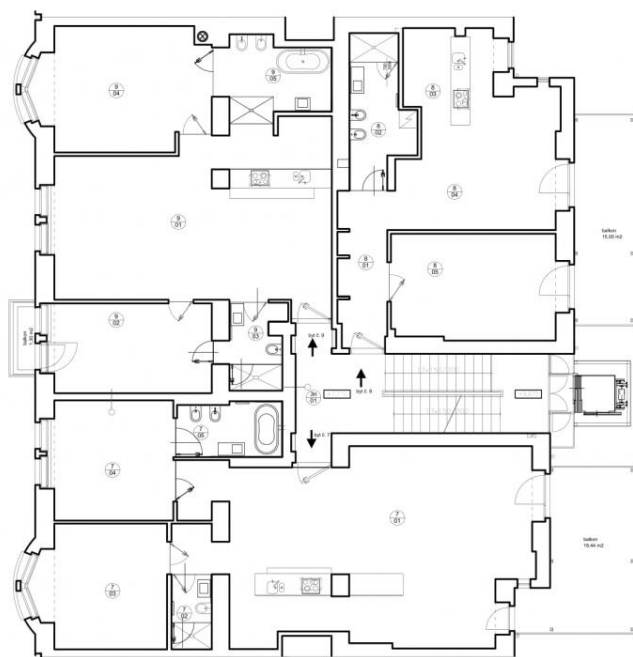
Web link:

www.viphomes.cz/5665

Agent:

Mária Mihinová

Phone: +420 606 731 973, Email: viphomes@viphomes.cz



Laubova 5, č.p. 1709
Praha - Vinohrady
3.NP

BYT 67			
OZN.	MÍSTNOST	m ²	PODLAHA
701	obývací pokoj s kuchyní	70,07	dřev. parkety
702	koupelna I.	3,50	keram. dlažba
703	ložnice I.	18,48	dřev. parkety
704	ložnice II.	17,40	dřev. parkety
705	koupelna II.	6,63	keram. dlažba
BYT 67 celkem		116,06	

BYT 68			
OZN.	MÍSTNOST	m ²	PODLAHA
801	chodba	8,80	dřev. parkety
802	koupelna	9,34	keram. dlažba
803	kuchyně + jídelna	18,44	dřev. parkety
804	obývací pokoj	14,27	dřev. parkety
805	ložnice	20,92	dřev. parkety
BYT 68 celkem		71,77	

BYT 69			
OZN.	MÍSTNOST	m ²	PODLAHA
901	obývací pokoj s kuchyní	51,91	dřev. parkety
902	ložnice I.	17,07	dřev. parkety
903	koupelna I.	5,75	keram. dlažba
904	ložnice II.	23,79	dřev. parkety
905	koupelna II.	9,92	keram. dlažba
BYT 69 celkem		108,44	

3n01	schodiště	26,43	teraso
------	-----------	-------	--------

Estate id: 5665

Web link:

www.viphomes.cz/5665

Agent:

Mária Mihinová

Phone: +420 606 731 973, Email: viphomes@viphomes.cz